

Private guided tours

General Information

- › We offer private tours for groups in German, English and French. Tours in Italian, Spanish, Dutch, Swedish, Chinese and Japanese are also available upon request. Maximum group size is 30 persons, unless otherwise indicated.
- › On weekends and holidays an additional fee of € 75.00 is charged. For tours of the current exhibition or in the Vitra Schaudapot after closing we charge an additional fee of € 150.00.
- › Payment in cash or by credit card; invoices are issued for amounts upwards of € 300.00.
- › Reservations for private tours must be made at least three weeks in advance.

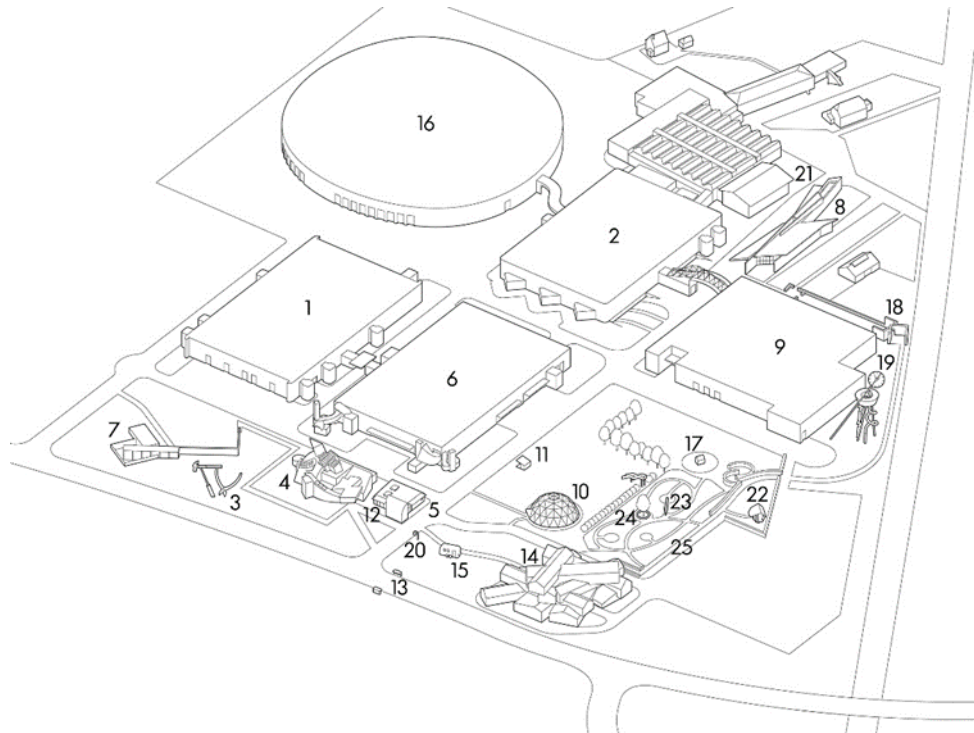
Contact/Reservations

Vitra Design Museum, Visitor Services

T +49.7621.702.3510, F +49.7621.702.3590

info@design-museum.de, www.design-museum.de

Vitra Campus Site Plan



- | | | | |
|-----|---|----|--|
| 1,2 | Factory Buildings, Nicholas Grimshaw, 1981/1983 | 14 | VitraHaus, Herzog & de Meuron, 2010 |
| 3 | Balancing Tools, Claes Oldenburg & Coosje van Bruggen, 1984 | 15 | Airstream Kiosk, 1968/2011 |
| 4 | Vitra Design Museum, Frank Gehry, 1989 | 16 | Factory Building, SANAA, 2012 |
| 5 | Vitra Design Museum Gate, Frank Gehry, 1989 | 17 | Diogene, Renzo Piano, 2013 |
| 6 | Factory Building, Frank Gehry, 1989 | 18 | Álvaro-Siza-Promenade, 2014 |
| 7 | Conference Pavilion, Tadao Ando, 1993 | 19 | Vitra Slide Tower, Carsten Höller, 2014 |
| 8 | Fire Station, Zaha Hadid, 1993 | 20 | Bell, from: 24 Stops, Tobias Rehberger, 2015 |
| 9 | Factory Building, Álvaro Siza, 1994 | 21 | Vitra Schaudapot, Herzog & de Meuron, 2016 |
| 10 | Dome, after Richard Buckminster Fuller, 1975/2000 | 22 | Blockhaus, Thomas Schütte 2018 |
| 11 | Petrol Station, Jean Prouvé, 1953/2003 | 23 | Ruisseau, Ronan & Erwan Bouroullec, 2018 |
| 12 | Vitra Design Museum Gallery, Frank Gehry, 2003 | 24 | Ring, Ronan & Erwan Bouroullec, 2018 |
| 13 | Bus Stop, Jasper Morrison, 2006 | 25 | Oudolf Garden, Piet Oudolf, 2020 |

Vitra Design Museum

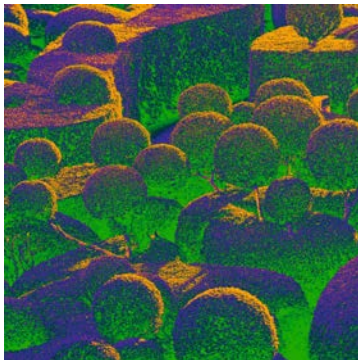


Group Visits

The Vitra Design Museum numbers among the world's leading museums of design. It is dedicated to the research and presentation of design, past and present, and examines design's relationship to architecture, art and everyday culture. In the main museum building by Frank Gehry, the museum annually mounts two major temporary exhibitions. In addition, smaller shows are presented in the Vitra Museum Gallery, which often follow a more contemporary and experimental approach.

Admission: € 12.00 per person for groups of 10 or more
Free admission for children under 12

Guided tour of the current exhibition



Garden Futures

25 March – 3 October 2023

Gardens reflect identities, dreams, and visions; they are deeply rooted in our culture. Recent years have seen a resurgence of interest in the garden – not only as a romantic idyll, but as a field of experimentation for concepts related to social justice, climate change, biodiversity, and a sustainable future. Gardens have become places of the avant-garde. Explore the history and future of the modern garden on this exclusive tour.

Duration: approx. 60 minutes
Tour fee: € 185.00, plus admission € 12.00 per person
Group size: max. 20 persons

Digital Tour

If a visit on site is not possible, you can also get to know the exhibition with an exclusive online tour. This requires an internet connection and the free video conferencing software Zoom.

Duration: approx. 60 minutes
Tour fee: € 185.00

Vitra Schaudepot



Group visits

The Vitra Design Museum collection encompasses some 20,000 artefacts, including 7,000 pieces of furniture and 1,000 lighting objects. A multifaceted presentation of these holdings, which comprise one of the world's seminal design collections, is staged in the Vitra Schaudepot by Herzog & de Meuron. Over 400 key objects are displayed in the main hall. On the lower level parts of the non-public storage area are on display. There you will also find the Schaudepot Lab, where you can learn more about materials, processes, and prototypes of modern furniture design.

Admission: € 9.00 per person for groups of 10 or more
Free for children under 12

Guided tours of the Vitra Schaudepot



Colour Rush!

Up to May 2024, the presentation at the Vitra Schaudepot, is wholly devoted to colour. Dutch designer Sabine Marcelis has transformed the Schaudepot in one simple, sweeping gesture by sorting its roughly four hundred exhibits by colour. Her installation shows the collection from new perspectives and yields fascinating cross-references between periods and styles. The presentation is complemented by historical and contemporary objects and documents from the museum archives that illustrate the importance of colour in design.

Duration: approx. 60 minutes
Tour fee: € 185.00 plus admission € 9.00 per person
Maximum group size: 20 persons

Digital Tour: Collection Highlights

Explore the Vitra Design Museum's renowned collection in an exclusive digital tour and get to know some of its highlights, including iconic pieces by designers like Arne Jacobsen, Aino Aalto, Verner Panton, and Charles & Ray Eames. Alongside landmarks from two hundred years of furniture design, the tour also introduces rare and lesser-known objects, prototypes, experimental models, and designs by anonymous makers.

Duration: approx. 60 minutes
Tour fee: € 185.00



Focus: Eames – Materials and Design Process

Today many furnishings created by Charles and Ray Eames are revered as design icons, such as the Eames Plastic Chairs, the Aluminium Chair or the legendary Lounge Chair. The focus tour gives insight into the material innovations and design processes of the Eames, illustrated via select examples from the collection and Charles Eames' studio.

Duration: approx. 60 minutes
Tour fee: € 185.00, plus admission € 9.00 per person
Maximum group size: 20 persons



Focus: Material

Material matters! Materials always influence the design and manufacture of a piece of furniture. The focus tour offers the opportunity to learn about the diversity of materials in furniture design from its beginning to the present day as well as to discover unexpected material experiments.

Duration: approx. 60 minutes
Tour fee: € 185.00, plus admission € 9.00 per person
Group size: max. 20 persons



Backstage @Vitra Design Museum

What do curators do? How do objects end up in a museum? What happens in a restoration workshop? Get an exclusive glimpse of the offices, library and the restoration studio of the Vitra Design Museum. The tour also includes a visit to the Barragán Gallery, which opens in May 2022 and offers insights into the archive of Mexican architect Luis Barragán.

Duration: approx. 60 minutes
Tour fee: € 185.00
Group size: max. 20 persons

Vitra Campus



Architecture Tour (2h)

This comprehensive tour of the Vitra Campus provides an overview of the history of the Vitra company and the evolution of the company premises in Weil, placing special emphasis on the Fire Station designed by Zaha Hadid, the Conference Pavilion by Tadao Ando and the Schaudepot by Herzog & de Meuron.

On the way, participants learn about the factory buildings designed by Frank Gehry, Nicholas Grimshaw, Álvaro Siza and SANAA, as well as the dome after Richard Buckminster Fuller and Jean Prouvé's petrol station. The VitraHaus by Herzog & de Meuron is visible from different perspectives during the tour and can be visited on an individual basis.

Duration: approx. 120 minutes

Tour fee: € 275.00

Group size: max. 30 persons

Digital Tour: Campus Architecture

The Vitra Campus is unique for its iconic contemporary architecture. An exclusive digital tour now enables you and your group to explore buildings by Zaha Hadid, Frank Gehry, Tadao Ando, Herzog & de Meuron, and SANAA on a remote visit to the Vitra Campus

Duration: approx. 60 minutes

Tour fee: € 185.00



Vitra Campus Circuit (1h)

The tour provides an overview of the company's history and the development of the Vitra Campus in Weil with over a dozen buildings by world-renowned architects. The guided tour includes besides the Fire Station by Zaha Hadid also other parts of the non-public Vitra Campus, such as the factory buildings designed by Frank Gehry, Nicholas Grimshaw and Álvaro Siza.

Duration: approx. 60 minutes

Tour fee: € 185.00

Group size: max. 30 persons



Oudolf Garten

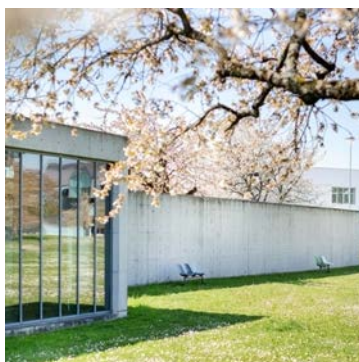
May – November

The garden created by Dutch designer Piet Oudolf in 2020 adds another facet to the Vitra Campus. The artful wilderness consists of nearly thirty thousand plants and covers four thousand square meters. Its array of colours changes with the seasons, providing a rich setting for the surrounding architecture. The guided tour will shed light on the layout and the creative process as well as introduce exemplary plants species.

Duration: approx. 60 minutes

Tour fee: € 185.00

Maximum group size: 20 persons



Japanese Architecture at the Vitra Campus

After the conference pavilion by Tadao Ando and the production hall by SANAA, the Vitra Campus has complemented its unique architectural ensemble since 2022 with a new highlight of Japanese architecture: Kazuo Shinohara's Umbrella House. Learn more about these buildings exclusively in the context of a diverse Japanese building culture.

Duration: approx. 60 minutes

Tour fee: € 185.00

Group size: max. 30 persons



Wunderkammer: Robots & Space Toys

Another attraction at the Vitra Campus, the »Wunderkammer« presents spellbinding mise-en-scènes featuring more than one thousand action figures from the collection of Rolf Fehlbaum, Chairman Emeritus of Vitra. This includes robots, space toys, comic book characters, folk art, and advertising, often created by anonymous artists and designers. All of them are products of a pop culture that still fascinates millions of children and grown-ups today.

Please note that the presentation is only suitable for children over 12 years old.

Duration: approx. 90 minutes

Tour fee: € 250.00

Maximum group size: 10 persons



Production

Take a look behind the scenes of the production on the Vitra Campus. Experience different steps of the manufacturing process of the Aluminium Chair on a guided tour through the production hall by Frank Gehry. The chair developed by Charles and Ray Eames in 1958 is considered one of the greatest furniture designs of the 20th century. Vitra has been producing this timeless classic over a period of decades in the same superior quality.

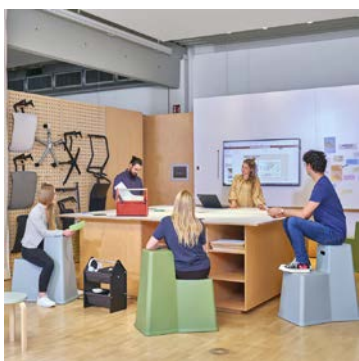
The tour is followed by an introduction to Vitra's test centre.

Only available: Mo – Fr, 10 am – 3 pm

Duration: approx. 60 minutes

Tour fee: € 185.00

Maximum group size: 10 persons, children over 14 years



Citizen Office

The Citizen Office tour provides insights into the exemplary design of an open space office of the Vitra company.

Duration: approx. 45 minutes

Tour fee: € 170.00

Maximum group size: 10 persons



»24 Stops« Walk

Covering a linear distance of six kilometres, the sculpture path »24 Stops« links two countries, two municipalities, two cultural institutions – and countless stories. The path runs between Weil am Rhein and Riehen, between the Fondation Beyeler and the Vitra Campus. Guided by 24 waymarkers created by the artist Tobias Rehberger, walkers can explore a uniquely diverse natural and cultural landscape.

Get to know »24 Stops« with an introduction about the artist, a presentation of individual objects and information about the surrounding landscape. The tour starts at the Vitra Campus and ends at the Fondation Beyeler.

Duration: approx. 120 minutes

Tour fee: € 300.00, no holiday surcharge

Picnic arrangement available upon request:

Duration: approx. 180 minutes

Tour fee: €450.00, plus picnic package € 12,50 per person

It is possible to combine some of the guided tours listed here. We are happy to assist you.

Please note that only Vitra Design Museum guides are authorized to conduct tours in the Vitra Design Museum, the Vitra Schaudepot and on the Vitra Campus.

Please also be aware that the buildings presented during the guided tours are in use. Occasional restrictions may occur during the tours.

Credits: (Bild 1, 6, 7) © Vitra Design Museum, Foto: Bettina Matthiessen; (Bild 2) © Vitra Design Museum, Illustration: Lorenz Klingebiel and Dominik Krauss; based on the photo: Les Jardins de Marqueyssac, Dordogne, France, © Laugery; (Bild 3) © Vitra, Foto: Julien Lanoo; (Bild 4) © Vitra Design Museum, Foto: Florian Böhm; (Bild 5) © Eames Office LLC, Foto: Charles Eames; (Bild 8) © Vitra, Foto: Erich Meyer; (Bild 9-11) © Vitra, Foto: Julien Lanoo; (Bild 12) © 2007 Eames Office LLC; (Bild 13) © Vitra, Foto: Tonatiuh Ambrosetti; (Bild 14) © Vitra Design Museum, Foto: Mark Niedermann.

Version 28.03.2023. Subject to changes.