

# Private guided tours for school and university groups

## General Information

- › We offer private tours for groups in German, English and French. Tours in Italian, Spanish, Dutch, Swedish, Chinese and Japanese are also available upon request. Maximum group size is 30 persons, unless otherwise indicated.
- › On weekends and holidays an additional fee of € 75.00 is charged. For tours of the current exhibition or in the Vitra Schaudetpot after closing we charge an additional fee of € 150.00.
- › Payment in cash or by card; invoices are issued for amounts upwards of € 300.00.
- › Reservations for private tours must be made at least three weeks in advance.

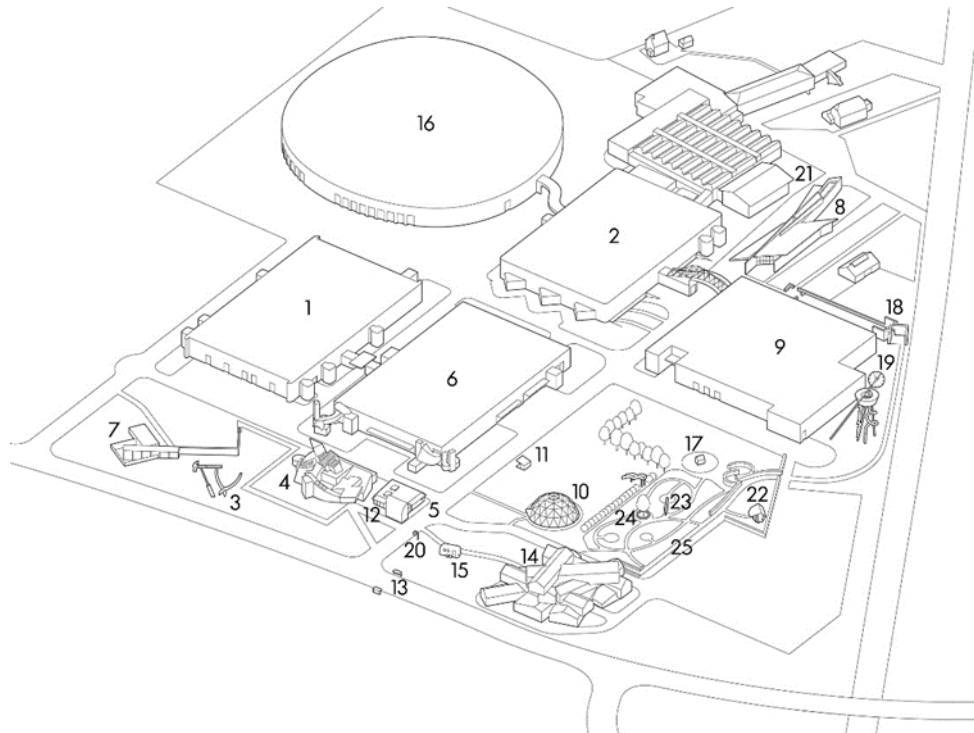
## Contact/Reservations

Vitra Design Museum, Visitor Services

T +49.7621.702.3510, F +49.7621.702.3590

info@design-museum.de, www.design-museum.de

## Vitra Campus Site Plan



- |     |   |    |  |
|-----|---|----|--|
| 1,2 | Factory Buildings, Nicholas Grimshaw, 1981/1983             | 14 | VitraHaus, Herzog & de Meuron, 2010          |
| 3   | Balancing Tools, Claes Oldenburg & Coosje van Bruggen, 1984 | 15 | Airstream Kiosk, 1968/2011                   |
| 4   | Vitra Design Museum, Frank Gehry, 1989                      | 16 | Factory Building, SANAA, 2012                |
| 5   | Vitra Design Museum Gate, Frank Gehry, 1989                 | 17 | Diogene, Renzo Piano, 2013                   |
| 6   | Factory Building, Frank Gehry, 1989                         | 18 | Álvaro-Siza-Promenade, 2014                  |
| 7   | Conference Pavilion, Tadao Ando, 1993                       | 19 | Vitra Slide Tower, Carsten Höller, 2014      |
| 8   | Fire Station, Zaha Hadid, 1993                              | 20 | Bell, from: 24 Stops, Tobias Rehberger, 2015 |
| 9   | Factory Building, Álvaro Siza, 1994                         | 21 | Vitra Schaudetpot, Herzog & de Meuron, 2016  |
| 10  | Dome, after Richard Buckminster Fuller, 1975/2000           | 22 | Blockhaus, Thomas Schütte 2018               |
| 11  | Petrol Station, Jean Prouvé, 1953/2003                      | 23 | Ruisseau, Ronan & Erwan Bouroullec, 2018     |
| 12  | Vitra Design Museum Gallery, Frank Gehry, 2003              | 24 | Ring, Ronan & Erwan Bouroullec, 2018         |
| 13  | Bus Stop, Jasper Morrison, 2006                             | 25 | Oudolf Garden, Piet Oudolf, 2020             |

# Vitra Design Museum

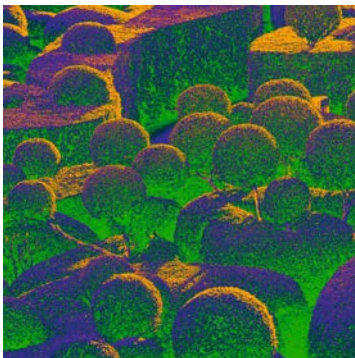


## Group Visits

The Vitra Design Museum numbers among the world's leading museums of design. It is dedicated to the research and presentation of design, past and present, and examines design's relationship to architecture, art and everyday culture. In the main museum building by Frank Gehry, the museum annually mounts two major temporary exhibitions. In addition, smaller shows are presented in the Vitra Museum Gallery, which often follow a more contemporary and experimental approach.

Price: reduced € 6.00 per student for groups of 10 and more

## Guided tour of the current exhibition



## Garden Futures

25 March – 3 October 2023

Gardens reflect identities, dreams, and visions; they are deeply rooted in our culture. Recent years have seen a resurgence of interest in the garden – not only as a romantic idyll, but as a field of experimentation for concepts related to social justice, climate change, biodiversity, and a sustainable future. Gardens have become places of the avant-garde. Explore the history and future of the modern garden on this exclusive tour.

Duration: approx. 60 minutes

Tour fee: € 160.00, plus admission € 6.00 per person

Group size: max. 20 persons

## Digital Tour

If a visit on site is not possible, you can also get to know the exhibition with an exclusive digital tour. This requires an internet connection and the free video conferencing software Zoom.

Duration: approx. 60 minutes

Tour fee: € 160.00

## Vitra Schaudepot



### Group visits

The Vitra Design Museum collection encompasses some 20,000 artefacts, including 7.000 pieces of furniture and 1.000 lighting objects. A multifaceted presentation of these holdings, which comprise one of the world's seminal design collections, is staged in the Vitra Schaudepot by Herzog & de Meuron. Over 400 key objects are displayed in the main hall. On the lower level of the Vitra Schaudepot parts of the non-public storage area are on display. There you will also find the Schaudepot Lab, where you can learn more about materials, processes, and prototypes of modern furniture design.

Price: reduced € 6.00 per student for groups of 10 and more

### Guided tours of the Vitra Schaudepot



### »Colour Rush!«

Up to May 2024, the presentation at the Vitra Schaudepot, is wholly devoted to colour. Dutch designer Sabine Marcelis has transformed the Schaudepot in one simple, sweeping gesture by sorting its roughly four hundred exhibits by colour. Her installation shows the collection from new perspectives and yields fascinating cross-references between periods and styles. The presentation is complemented by historical and contemporary objects and documents from the museum archives that illustrate the importance of colour in design.

Duration: approx. 60 minutes

Tour fee: € 160.00 plus admission € 6.00 per person

Maximum group size: 20 persons

### Digital Tour: Collection Highlights

Explore the Vitra Design Museum's renowned collection in an exclusive digital tour and get to know some of its highlights, including iconic pieces by designers like Arne Jacobsen, Aino Aalto, Verner Panton, and Charles & Ray Eames. Alongside landmarks from two hundred years of furniture design, the tour also introduces rare and lesser-known objects, prototypes, experimental models, and designs by anonymous makers.

Duration: approx. 60 minutes

Tour fee: € 160.00



### **Focus: Eames – Materials and Design Process**

Today many furnishings created by Charles and Ray Eames are revered as design icons, such as the Eames Plastic Chairs, the Aluminium Chair or the legendary Lounge Chair. The focus tour gives insight into the material innovations and design processes of the Eames, illustrated via select examples from the collection and Charles Eames' studio.

Duration: approx. 60 minutes

Tour fee: € 160.00, plus admission € 6.00 per person

Weekend and holiday surcharge: € 60.00

Maximum group size: 20 persons



### **Focus: Material**

Material matters! Materials always influence the design and manufacture of a piece of furniture. The focus tour offers the opportunity to learn about the diversity of materials in furniture design from its beginning to the present day as well as to discover unexpected material experiments.

Duration: approx. 60 minutes

Tour fee: € 160.00, plus admission € 6.00 per person

Group size: max. 20 persons

## **Vitra Campus**



### **Architecture Tour (2h)**

This comprehensive tour of the Vitra Campus provides an overview of the history of the Vitra company and the evolution of the company premises in Weil, placing special emphasis on the Fire Station designed by Zaha Hadid, the Conference Pavilion by Tadao Ando and the Schaudapot by Herzog & de Meuron.

On the way, participants learn about the factory buildings designed by Frank Gehry, Nicholas Grimshaw, Álvaro Siza and SANAA, as well as the dome after Richard Buckminster Fuller and Jean Prouvé's petrol station.

Duration: approx. 120 minutes

Tour fee: € 180.00

Group size: max. 30 persons

### **Special rate for student groups:**

Vitra Campus architecture tour (2 hours) plus admission to the Vitra Design Museum or the Vitra Schaudapot for € 300.00, weekend and holiday surcharge € 60.00

**Digital Tour: Campus Architecture**

The Vitra Campus is unique for its iconic contemporary architecture. An exclusive digital tour now enables you and your group to explore buildings by Zaha Hadid, Frank Gehry, Tadao Ando, Herzog & de Meuron, and SANAA on a remote visit to the Vitra Campus

Duration: approx. 60 minutes

Tour fee: € 160.00

**Vitra Campus Circuit (1h)**

The tour provides an overview of the company's history and the development of the Vitra Campus in Weil with over a dozen buildings by world-renowned architects. The guided tour includes besides the Fire Station by Zaha Hadid also other parts of the Vitra Campus, such as the factory buildings designed by Frank Gehry, Nicholas Grimshaw and Álvaro Siza as well as the dome after Richard Buckminster Fuller and Jean Prouvé's petrol station.

Duration: approx. 60 minutes

Tour fee: € 160.00

Group size: max. 20 persons

**Oudolf Garten**

May – November

The garden created by Dutch designer Piet Oudolf in 2020 adds another facet to the Vitra Campus. The artful wilderness consists of nearly thirty thousand plants and covers four thousand square meters. Its array of colours changes with the seasons, providing a rich setting for the surrounding architecture. The guided tour will shed light on the layout and the creative process as well as introduce exemplary plants species.

Duration: approx. 60 minutes

Tour fee: € 160.00

Maximum group size : 20 persons

**Japanese Architecture at the Vitra Campus**

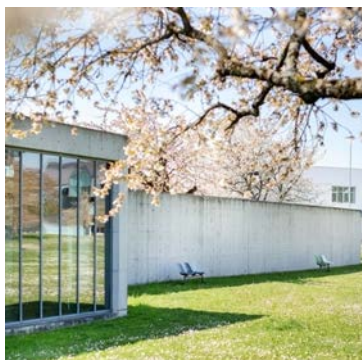
After the conference pavilion by Tadao Ando and the production hall by SANAA, the Vitra Campus has complemented its unique architectural ensemble since 2022 with a new highlight of Japanese architecture: Kazuo Shinohara's Umbrella House. Learn more about this building exclusively in the context of a diverse Japanese building culture.

Duration: approx. 60 minutes

Tour fee: € 160.00

Group size: max. 30 persons





### **Conference Pavilion / Tadao Ando**

This tour highlights the Conference Pavilion designed by Japanese architect Tadao Ando and offers visitors an in-depth introduction of both the interior and exterior of Ando's first realised building outside Japan. The tour starts in front of Frank Gehry's Vitra Design Museum and passes the sculpture »Balancing Tools« by Claes Oldenburg & Coosje van Bruggen.

Duration: approx. 60 minutes

Tour fee: € 90.00

Maximum group size : 20 persons



### **Production**

Take a look behind the scenes of the production on the Vitra Campus. Experience different steps of the manufacturing process of the Aluminium Chair on a guided tour through the production hall by Frank Gehry. The chair developed by Charles and Ray Eames in 1958 is considered one of the greatest furniture designs of the 20th century. Vitra has been producing this timeless classic over a period of decades in the same superior quality.

Find out more about its history as well as the significance of innovation, quality and sustainability at Vitra. The tour is followed by an introduction to Vitra's test centre.

Only available: Mo – Fr, 10 am – 3 pm; children over 14 years

Duration: approx. 60 minutes

Tour fee: € 160.00

Maximum group size: 10 persons



### **Citizen Office**

The Citizen Office tour provides insights into the exemplary design of an open space office of the Vitra company.

Duration: approx. 45 minutes

Tour fee: € 140.00

Maximum group size: 10 persons



### **»24 Stops« Walk**

Covering a linear distance of six kilometres, the sculpture path »24 Stops« links two countries, two municipalities, two cultural institutions – and countless stories. The path runs between Weil am Rhein and Riehen, between the Fondation Beyeler and the Vitra Campus. Guided by 24 waymarkers created by the artist Tobias Rehberger, walkers can explore a uniquely diverse natural and cultural landscape.

Get to know »24 Stops« with an introduction about the artist, a presentation of individual objects and information about the surrounding landscape. The tour starts at the Vitra Campus and ends at the Fondation Beyeler.

Duration: approx. 120 minutes

Tour fee: € 300.00, no holiday surcharge

#### **Picnic arrangement available upon request:**

Duration: approx. 180 minutes

Tour fee: €450.00, plus picnic package € 12,50 per person

It is possible to combine some of the guided tours listed here. We are happy to assist you!

Please note that only Vitra Design Museum guides are authorized to conduct tours in the Vitra Design Museum, the Vitra Schaud depot and on the Vitra Campus.

Please also be aware that the buildings presented during the guided tours are in use. Occasional restrictions may occur during the tours.

Credits: (Bild 1, 6, 7) © Vitra Design Museum, Foto: Bettina Matthiessen; (Bild 2) © Vitra Design Museum, Illustration: Lorenz Klingebiel and Dominik Krauss; based on the photo: Les Jardins de Marqueyssac, Dordogne, France, © Laugery;; (Bild 3) © Vitra, Foto: Julien Lanoo; (Bild 4) © Vitra Design Museum, Foto: Florian Böhm; (Bild 5) © Eames Office LLC, Foto: Charles Eames; (Bild 8) © Vitra, Foto: Erich Meyer; (Bild 9-11) © Vitra, Foto: Julien Lanoo; (Bild 12) © 2007 Eames Office LLC; (Bild 13) © Vitra, Foto: Tonatiuh Ambrosetti; (Bild 14) © Vitra Design Museum, Foto: Mark Niedermann.

Version 28.03.2023. Subject to changes.