

## **EXHIBITION OVERVIEW 2026**

### **VITRA DESIGN MUSEUM**

#### **Hella Jongerius: Whispering Things**

14 March 2026 – 6 September 2026

For more than thirty years, Hella Jongerius has been one of the leading figures in contemporary design. Her pioneering work spans textiles, ceramics, furniture, and lighting, as well as sculptural pieces. This exhibition is the first retrospective to present the full scope of the Dutch designer's oeuvre, including her collaborations with Maharam, KLM, Camper, and Vitra.

Since 2024, the archive of her design studio Jongeriuslab has been housed at the Vitra Design Museum. The objects and documents it contains offer insights into Jongerius' working methods, her multi-layered thinking, her passion for craft processes, and her deep engagement with materiality and the symbolism of objects. Her interest in craftsmanship and colour is always accompanied by critical reflection on her own practice and on the role of design in today's society. The exhibition catalogue also includes a detailed documentation of the Jongerius Archive at the Vitra Design Museum.



**01**

Hella Jongerius in her studio, 2023  
© Vitra Design Museum, photo: Roel van Tour



**02**

Hella Jongerius, »Chicle Project«, 2009  
© Jongerius Lab



**03**

Hella Jongerius, Colour recipe research, 2016  
© Jongerius Lab, photo: Mathijs Labadie / Roel van Tour



**04**

Hella Jongerius, »Kasese Chair«, 1999  
© Jongerius Lab, photo: Gerrit Schreurs

## **VITRA DESIGN MUSEUM**

### **Geoffrey Bawa: Architecture for the Senses**

26 September 2026 – 28 February 2027

With a career spanning five decades and over 200 projects, Geoffrey Bawa (1919-2003) counts as one of the most influential 20th-century architects in Asia. His work blends the principles of Modernism with vernacular and traditional elements to form a distinctive architectural language that responds sensitively to context, to local materials cultural identities. Bawa's remarkable oeuvre shaped the architecture of postcolonial Sri Lanka, and includes hotels, private residences, schools, universities, factories, office buildings, and the country's parliament. Today, his approach is being rediscovered worldwide as a guiding inspiration for socially and ecologically sustainable building practice.

In 2026, the Vitra Design Museum and M+ Hong Kong in collaboration with the Geoffrey Bawa Trust, will present the first major retrospective on Bawa in two decades. The exhibition foregrounds recurring themes in his work from interdisciplinary collaboration and ecological, social and cultural engagement to the formal qualities that define his architecture. Through an unprecedented wealth of drawings, models, furniture, photographs, and films, it brings to life the captivating, sensory quality of Bawa's enduring legacy.



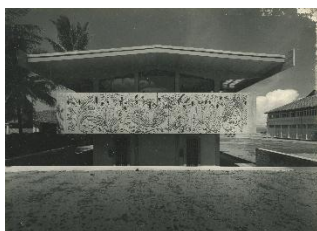
**05**

Geoffrey Bawa at his country house Lunuganga, c. 1996  
© Dominic Sansoni



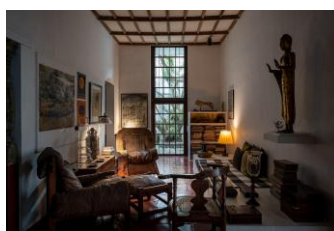
**06**

Tim Becher, Sectional elevation through the site, 1994  
© Geoffrey Bawa and Lunuganga Trust, all rights reserved



**07**

Geoffrey Bawa, Exterior view showing bas-reliefs by Gamini Jayasuriya at »St. Thomas Preparatory«, 1957–64  
© Geoffrey Bawa and Lunuganga Trust, all rights reserved



**08**

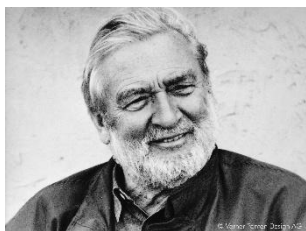
Geoffrey Bawa, Living room at »Number 11«, 2020,  
photograph by Banuka Vithanage  
© Geoffrey Bawa and Lunuganga Trust, all rights reserved

**VITRA SCHAUDEPOT**

**Verner Panton: Form, Colour, Space**

23 May 2026 – 9 May 2027

He made chairs float from the ceiling and created organic living landscapes that continue to fascinate us today: the Danish architect and designer Verner Panton (1926–1998) shaped post-war design like few others. To celebrate the centenary of his birth, the Vitra Design Museum will dedicate a major exhibition at the Vitra Schauddepot to Panton's work. Showcasing the full breadth of his creative output – from iconic pieces like the »Panton Chair« to his lighting and textile designs – it will also feature several of his little-known architectural projects. A walk-in reconstruction of the legendary »Fantasy Landscape« (1/8) 1970, brings Panton's revolutionary understanding of space and the spirit of the era vividly to life. The exhibition design transforms his sculptural, colour-rich worlds into an immersive experience. The show is based on the extensive Verner Panton Collection at the Vitra Design Museum, which is one of the most important of its kind and comprises a unique wealth of objects, drawings, models and archival materials. The exhibition, created in close collaboration with Verner Panton Design AG, invites visitors to rediscover a visionary designer – between Pop, utopia, and organic worlds of colour.



**09**

Verner Panton, 1993  
© Verner Panton Design AG, photo: Jens Bernsen



**10**

Verner Panton, »Fantasy Landscape«, installation view of the »Visiona II« exhibition, International Furniture Fair Cologne, 1970 © Verner Panton Design AG



**11**

Verner Panton, »Panton Chair«, Vitra, 1956–67  
© Verner Panton Design AG, © photo: Vitra Design Museum, Jürgen Hans



**12**

Marianne Panton in the »Panton Chair«, c. 1970  
© Verner Panton Design AG, photo: Louis Schnakenburg, Copenhagen

Please send any press inquiries regarding Panton directly to us via the following email address:  
[communications@design-museum.de](mailto:communications@design-museum.de) .

## **CURRENT EXHIBITIONS**

### **VITRA DESIGN MUSEUM**

#### **Catwalk: The Art of the Fashion Show**

Until 15 February 2026

They last barely fifteen minutes, yet their images are seen around the world: fashion shows are media spectacles, social rituals, and style-defining statements. The exhibition »Catwalk: The Art of the Fashion Show« at the Vitra Design Museum explores the history and cultural significance of this unique art form from its early forms around 1900 to the present day. Examples from fashion houses including Azzedine Alaïa, Balenciaga, Chanel, Dior, Gucci, Maison Martin Margiela, Prada, Viktor & Rolf, Louis Vuitton, and Yohji Yamamoto combine with original collection pieces, film and photographic material, stage props, and show invitations to create a vivid picture of more than one hundred years of catwalk history. Accompanying the exhibition is a richly illustrated catalogue designed as an A–Z of the fashion show, featuring contributions from model Matgosia Bela, sound supervisor Michel Gaubert, buyer Andreas Murkudis, and experts including Caroline Evans, Cathy Horyn, and Valerie Steele. An exhibition by the Vitra Design Museum and V&A Dundee.



**13**

Vitra Design Museum, installation view  
© Vitra Design Museum, photo: Bernhard Strauss



**14**

»Catwalk: The Art of the Fashion Show«,  
installation view  
© Vitra Design Museum, photo: Bernhard Strauss



**15**

»Catwalk: The Art of the Fashion Show«,  
installation view  
© Vitra Design Museum, photo: Bernhard Strauss



**16**

»Catwalk: The Art of the Fashion Show«,  
installation view  
© Vitra Design Museum, photo: Bernhard Strauss

**VITRA SCHAUDEPOT**

**Science Fiction Design: From Space Age to Metaverse**

Until 10 May 2026

From »Star Trek« and »2001: A Space Odyssey« to »Blade Runner«, many science-fiction films feature classic designs that have shaped our image of the future – and conversely, designers will often turn to science fiction when seeking inspiration for imaginary future objects and settings. The fascinating dialogue between science fiction and design is the subject of this year's themed presentation in the Vitra Schauddepot. The futuristic show staged by visual artist and designer Andrés Reisinger presents more than one hundred objects from the museum's collection alongside selected works of film and literature from a period extending from the early twentieth century to the Space Age of the 1960s and 70s to the present time and the virtual worlds of the metaverse.



**17**  
Andrés Reisinger, »The Shipping, Deep Space«, 2021  
© Reisinger Studio



**18**  
»Science Fiction Design«, installation view  
© Vitra Design Museum, photo: Mark Niedermann



**19**  
Still image from the film set of »Things To Come«, 1936  
© Vitra Design Museum Archive



**20**  
Joe Colombo, »Sella«, 1964/65  
© Vitra Design Museum, photo: Jürgen Hans

As of 4 November 2025, subject to change

**Press contact**

Vitra Design Museum  
Cynthia Kallmeyer  
PR Manager & Editor  
E [communications@design-museum.de](mailto:communications@design-museum.de)

**Further press images (download)**

BUREAU N  
Gabriela Ecke

E [gabriela.ecke@bureau-n.de](mailto:gabriela.ecke@bureau-n.de)

[www.design-museum.de/press-images](http://www.design-museum.de/press-images)

Press images

